

Dougherty Arts Center Replacement Project

Design Phase Update

April 2022



DOUGHERTYARTSCENTER
REPLACEMENT

Agenda

- **Welcome & Introduction** – Shuronda Robinson, Adisa Communications
- **Context & Status Update** – Laura Gass, Square One Consultants
- **Design Overview** – Rick Archer, Overland Architects
- **AIPP Update** – Marjorie Flanagan, Art in Public Places Program
- **Video and Next Steps** – Laura Esparza, PARD Division Manager
- **Questions and Discussion**

Engage with us!



City Council Approved Scheme

- Butler Shores location approved on 5/9/19, site layout approved on 5/20/21
- Directed to provide consolidated, underground parking (unfunded)
- Directed to seek alternative financing mechanisms & interest in philanthropy
- Since start of planning process:
 - (4) Open House Community meetings
 - (10) Small Group meetings
 - (12) Board and Commission Presentations
 - (2) City Council presentations
 - Ongoing partner coordination (COA, TTF, APF, FODAC, ZACH Theatre, etc.)



Site layout scenario 1A, as approved by council in May 2021

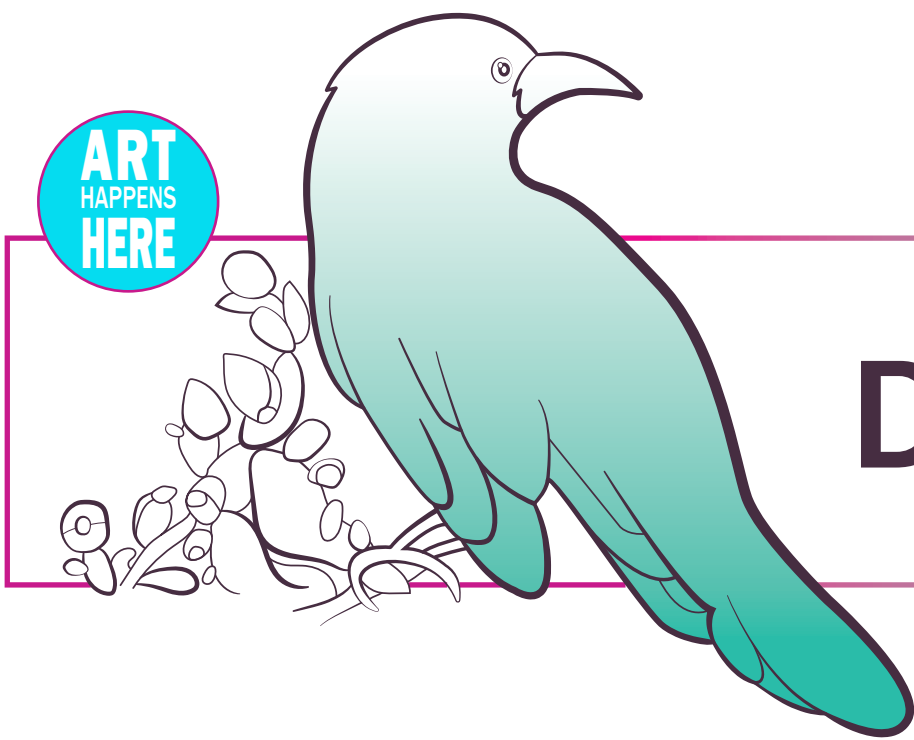
Project Budget

- Total Project Budget: approx. \$28 Million (2012 and 2018 Bonds)
- Available construction budget: approx. \$20 Million
- Funded building program of approx. 45,000sf
 - School & Youth Studios
 - Adult Studios & Artist Professional Development
 - Artist Gallery and Theaters
 - Administration, Circulation & Support
 - Limited adjacent park improvements
- Unfunded project components:
 - District parking consolidation in underground garage
 - Large scale park improvements



Project Timeline





DOUGHERTY ARTS CENTER

COMMUNITY UPDATE

AUSTIN, TX

2022 04 25

MISSION STATEMENT

The new building will radically expand DAC's ability to carry out its mission of supporting arts access for all. Like the current DAC, it will be a **hub of creativity and Austin's cultural living room**. But it will be an enhanced room, efficiently **calibrated to its function, healthy and full of light, with expanded programming**. It will be a sustainable model of Austin's park network, interpreting the mission of the Austin Parks and Recreation Department to create community through the arts.



GUIDING PRINCIPLES






WELCOMING

COMMUNAL



INSPIRING

SUSTAINABLE



CREATIVE

-  Pick-up, drop-off, and loading areas for Theaters, Studios, and School
-  Sense of arrival, discovery, and inspiration
-  Safe and inviting for all ages, mobilities, cultures, and identities
-  Integration of park and outdoor spaces with Arts Center
-  Draw public into the Art Center through park/art integration

-  Spaces for coffee, food trucks, cafe, or lounges for extended use of the facility
-  Shaded, protected outdoor courtyards for shared Art Center programming
-  Spaces for concessions, lounges
-  Galleries, Studios, and Theaters linked by informal gathering spaces
-  Foster community engagement through programming and shared spaces

-  Artist work on display throughout the facility
-  AIPP opportunities

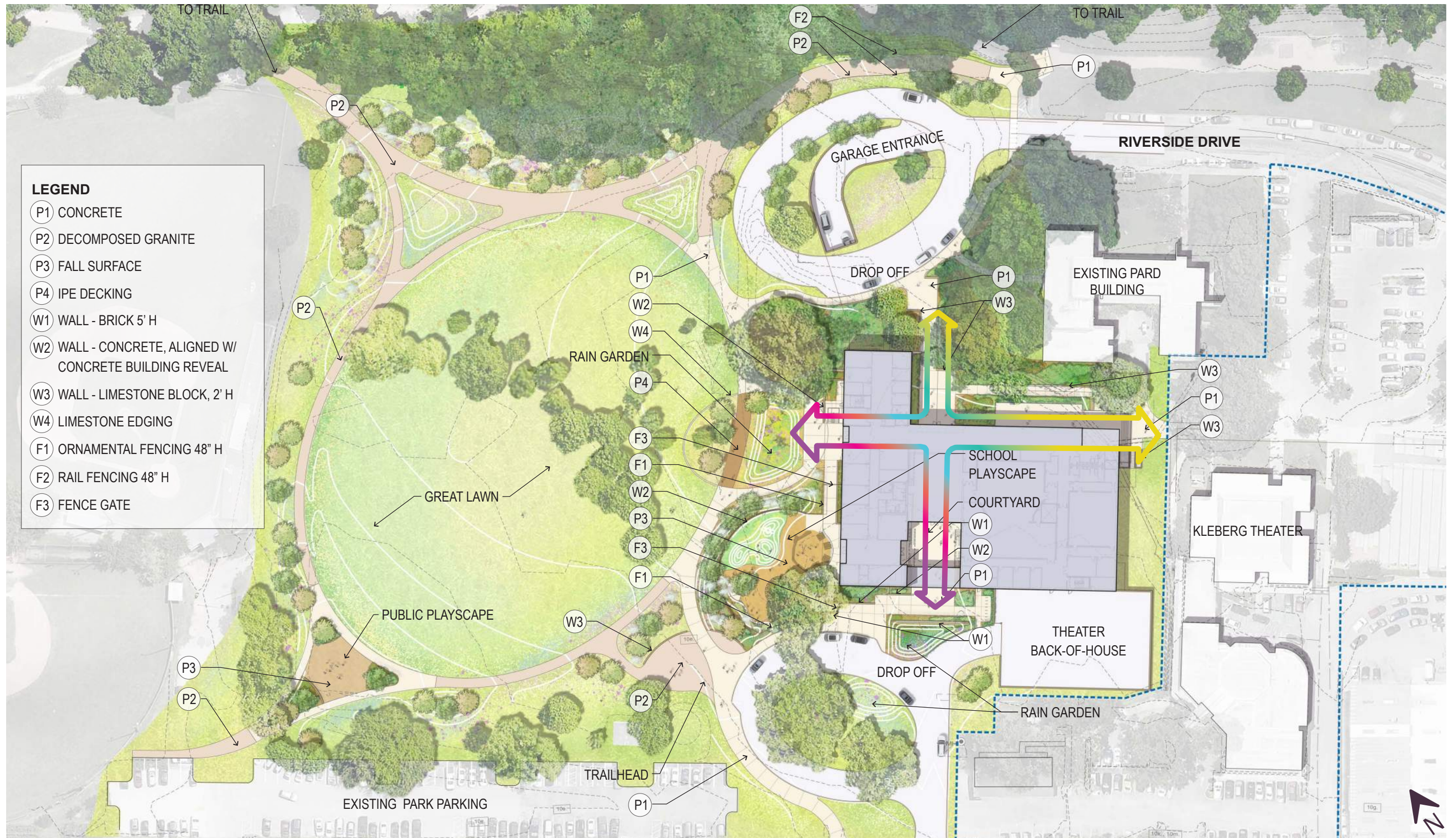
-  Abundant, controlled natural light
-  Parking integrated into the site and landscape
-  Durable architecture that respects the art on display
-  Landscape interwoven with art throughout district grounds
-  Flexible gallery spaces in terms of medium, scale, and location

-  Interactive exhibits throughout the Art Center
-  AIPP opportunities

- 1 Drainage Easement (Buildings not Allowed)
- 2 Waste Water Transmission below Lake (Building limited)
- 3 Waste Water Transmission Easement (Buildings not Allowed)
- 4 W. Riverside Dr. Right of Way ends @ PARD building
- 5 Significant Trees (Green to remain, Grey to be mitigated)
- 6 Ladybird Lake Trailhead Connection
- 7 Existing PARD Main Office Building
- 8 Zach Scott Theater Complex Lease Boundary



DESIGN CONSTRAINTS



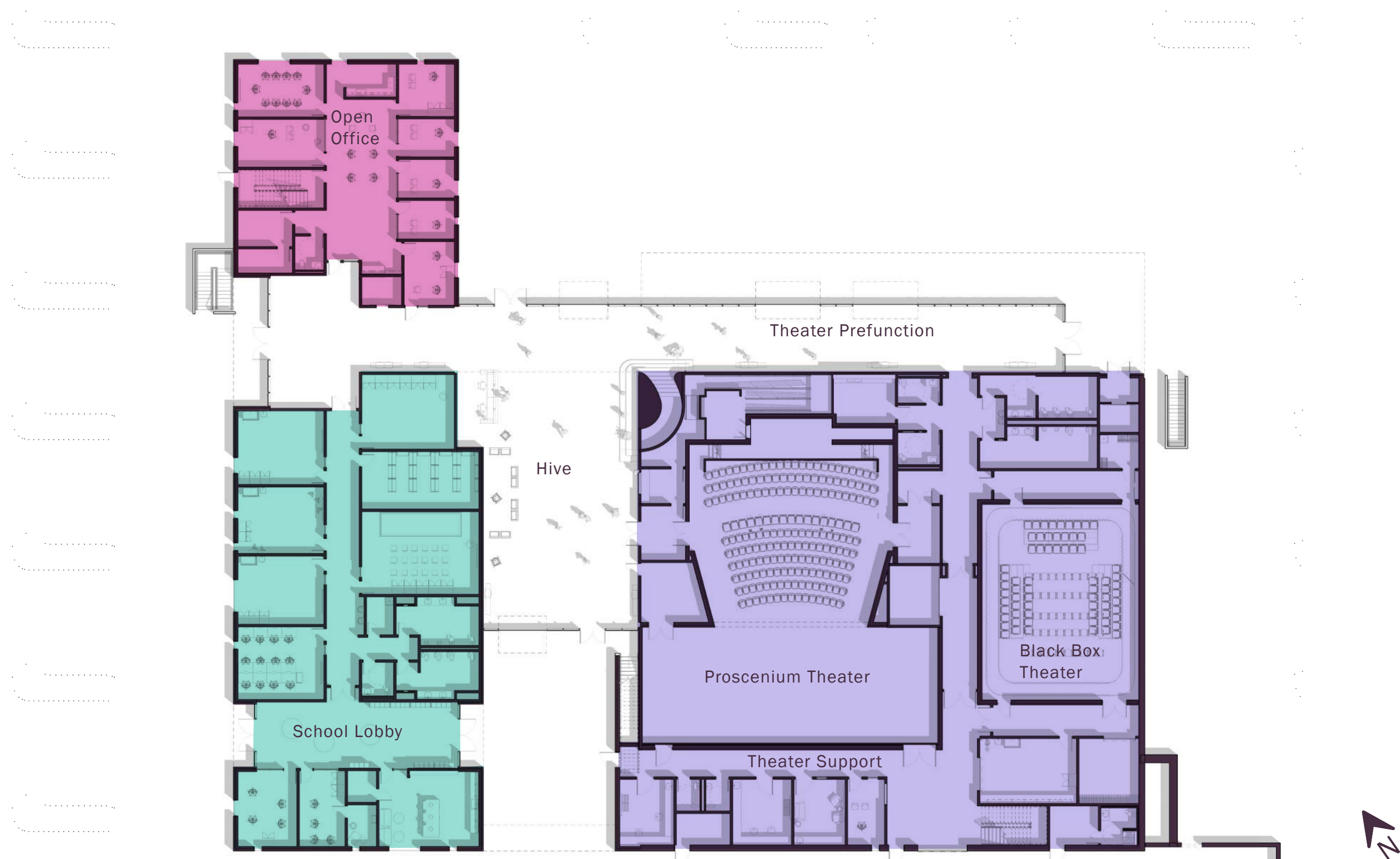
SITE PLAN

PROGRAMMING COMPARISONS

	SCHOOL	STUDIOS	THEATERS & GALLERY	ADMIN	PUBLIC / GENERAL
WHAT'S IMPROVING AT THE NEW DAC?	Youth Lobby & Entry School Drop-Off Access Youth Lockers Teachers' Offices	Painting & Drawing Studio Photography Studio Jewelry Studio & Metal Shop Studio Staff Office	Proscenium Theater Box Office Dressing Rooms Gallery Curator's Office	Lobby Reception/Info Desk Division Manager Office Staff Offices	Circulation Spaces Accessibility Wayfinding
WHAT'S BOTH EXPANDING & IMPROVING AT THE NEW DAC?	Painting & Drawing Classroom Art Classroom Theater/Drama Classroom Dance Studio Computer Labs Outdoor Playground Teachers' Lounge & Library Support Spaces & Storage Youth Restrooms	Photography Studio Darkroom Clay & Ceramics Studio Ceramics Storage Ceramics Glazing & Chemicals Private Outdoor Kiln Yard	Theater Prefunction Lobby Gallery Docent Rehearsal Space Theater Loading Theater Office Sound & Tech Support Space Private & Rentable Storage Theater Workshop Exhibition Prep/Storage	Business Office Staff Breakroom & Kitchen Copy Room Maintenance Office	Displays for Art throughout Secure Parking Access Public Restrooms Family Restrooms
WHAT'S BEING ADDED AT THE NEW DAC?	School Connect Space Outdoor Public Learning Space Designated Specialists' Office Secure Isolation Room Teachers' Kitchen & Laundry	Studio Connect Space Studio Private Balcony Indoor Ceramics Kilns Multi-Purpose Studio Artists in Residence Studios Artists' Resource Center	Black Box Theater Private Outdoor Gallery Private Theater Restrooms Cafe/Catering Theater Green Room Gallery Art Vault	Additional Staff Offices Shared Open Office space Conference/Training Room Staff Showers/Bike Storage	Communal Lobby & Skybridge Rooftop Terrace Creative Makerspace Gathering/Event Plazas Underground Private Garage Private/Public Courtyards Public Sculpture Opportunities Interactive/Teaching Gardens Raingardens & Boardwalks Great Lawn River Trailhead & Connections

PROGRAM KEY

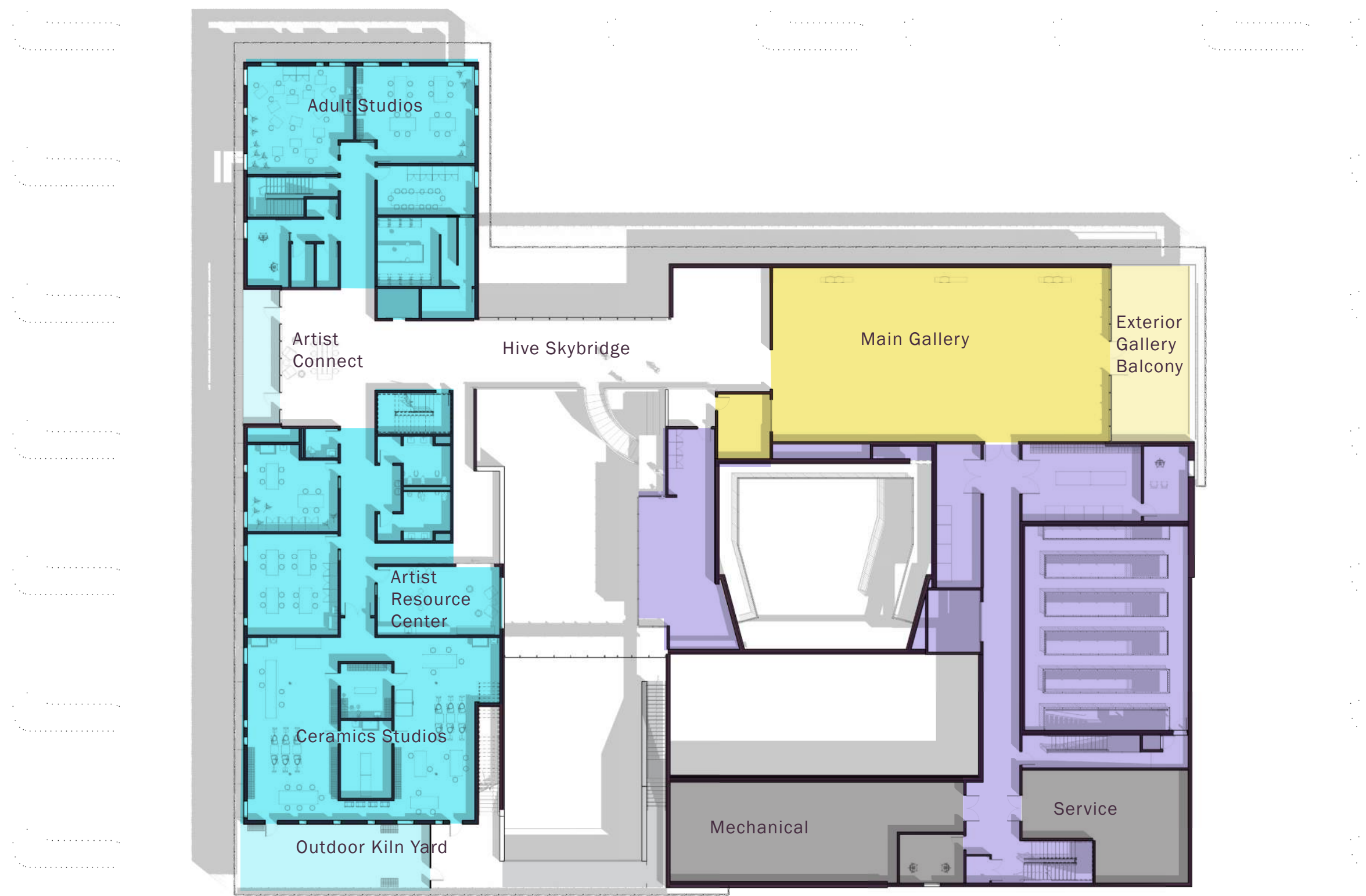
- ADMIN
- SCHOOL
- THEATER
- STUDIOS
- GALLERY
- COMMON
- SERVICE



LEVEL 01 PLAN

PROGRAM KEY

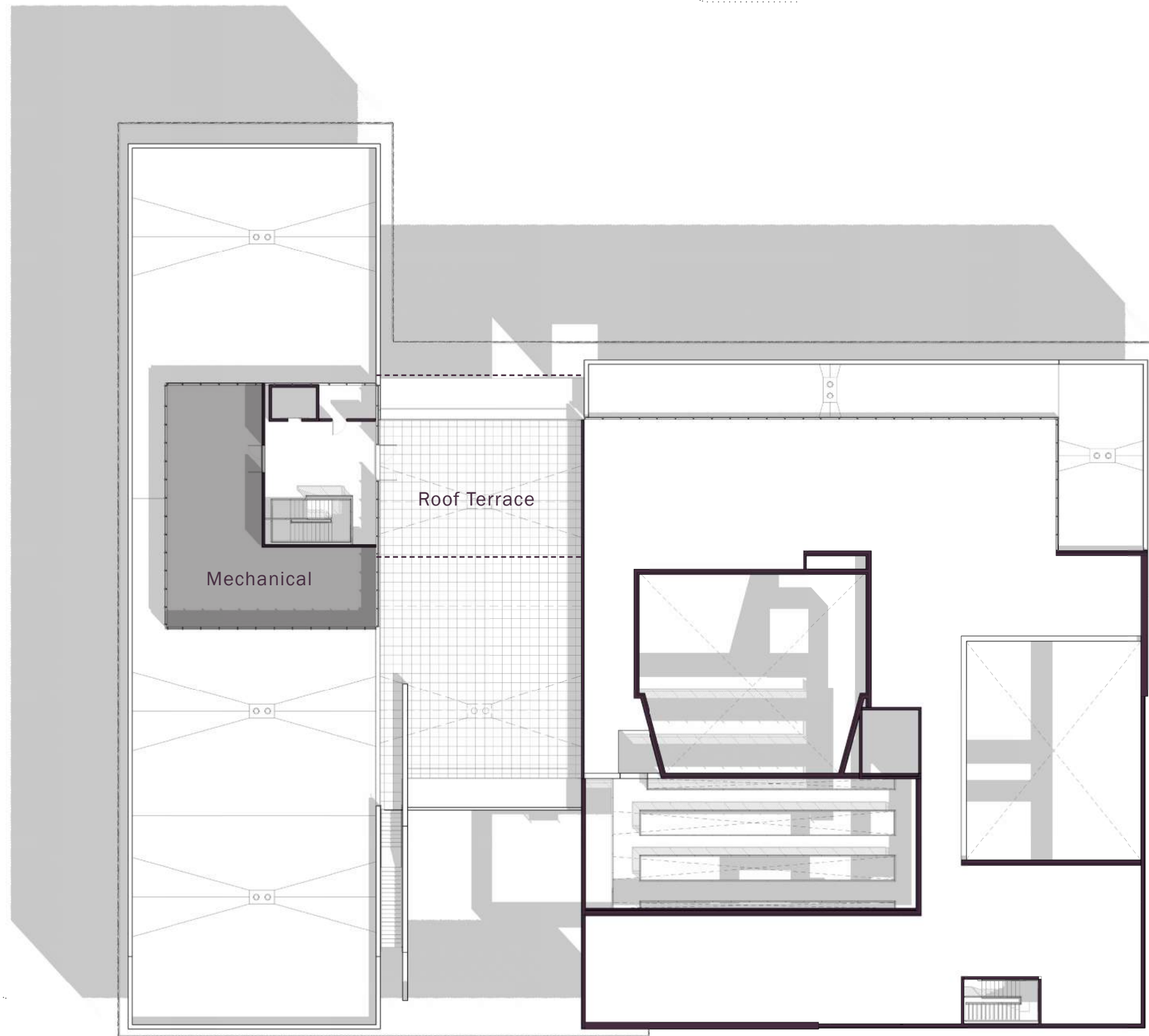
- ADMIN
- SCHOOL
- THEATER
- STUDIOS
- GALLERY
- COMMON
- SERVICE



LEVEL 02 PLAN

PROGRAM KEY

- ADMIN
- SCHOOL
- THEATER
- STUDIOS
- GALLERY
- COMMON
- SERVICE



LEVEL 03 PLAN



AERIAL PERSPECTIVE

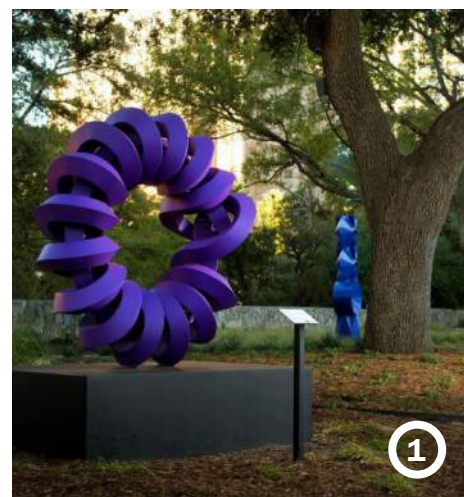


LOOKING SOUTH

NORTH COURTYARD

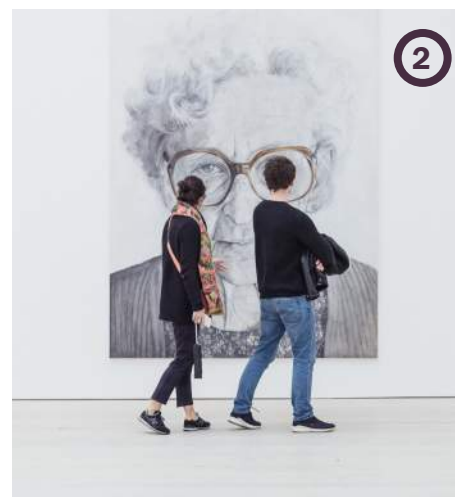


⑥ Roof Terrace ⑦ Existing, preserved Live Oak ⑧ The Hive



OUTDOOR GATHERING & SCULPTURE UNDER SHADE

The North Courtyard provides space for outdoor gathering and outdoor sculpture under the shade of the large, preserved Live Oaks west of PARD.



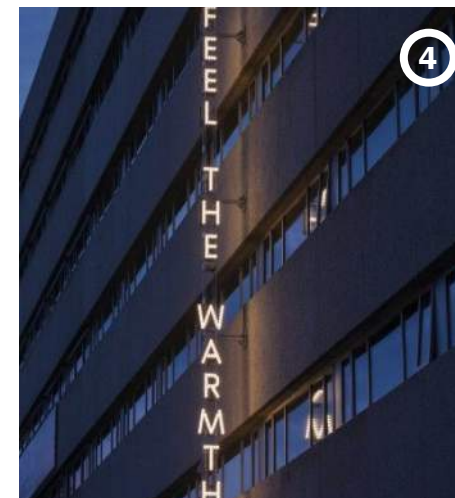
ART EVERYWHERE

Along the Theater prefunction space, where visitors will gather before & after performances, large gallery walls provide opportunity for the display of art. Visible from the entry and North courtyard, this display space greets visitors at the ground level.



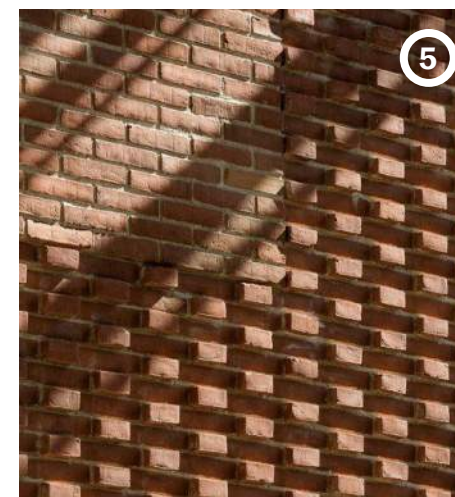
INTEGRATED SIGNAGE

Thinking creatively about the DAC's materiality, signage will be integrated with the building facade, utilizing opportunities such as perforated metal patterns to express text.



EXPRESSIVE IDENTITY

In addition to DAC signage and wayfinding, opportunities for expressive identity signage have been considered at key entries. Citing neon as a potential approach, DAC can share messages such as "Art Happens Here" as identifiers of the facility's programming.



BRICK CURTAIN

Undulations in the brick coursing reference the curtain-like form of the metal screen above and communicate a care for craft that celebrates art-making within.



NORTH COURTYARD

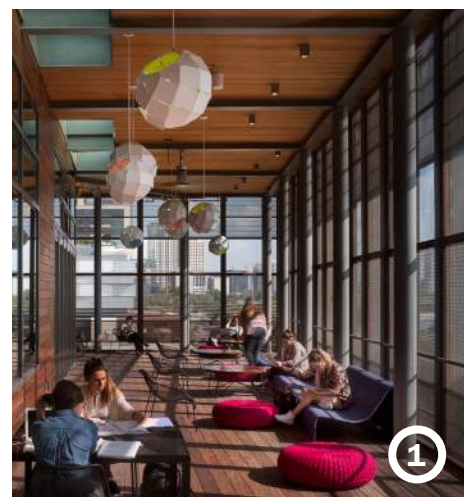


VIEW FROM WEST GREAT LAWN AREA, LOOKING EAST

GREAT LAWN

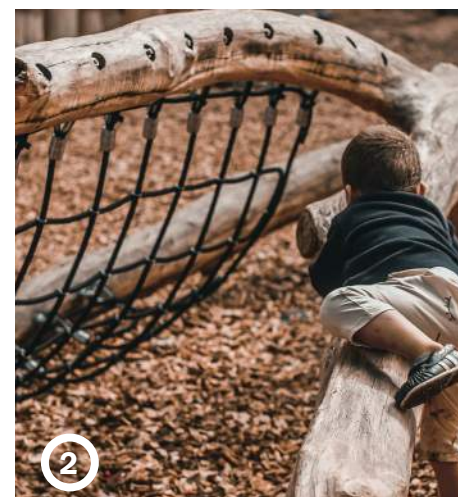


6 Stair down to Garage



STUDIO CONNECT

Extending the interior gathering space towards the park, the Studio Connect balcony offers a shaded, communal outdoor lounge space for DAC artists.



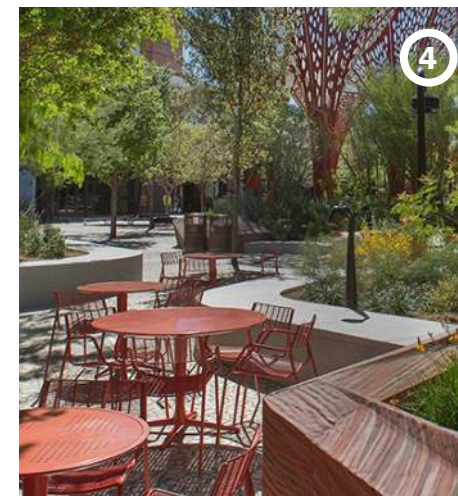
SPACE TO PLAY

Directly accessed from the School Connect Space, the new children's playground celebrates nature and exploration in a specially designed, secure outdoor setting.



ART EVERYWHERE

At the termination of the building's primary west axis and view corridor, a key moment for outdoor sculpture is held at the defining edge of the western seating group and raingarden. The sculpture will capture views and greet visitors from the park.



SPACE TO GATHER

Just beyond the building's west entry, nestled into the raingarden, outdoor gathering space is provided for students and visitors to engage, meet, and find rest in nature.



EDUCATION IN NATURE

Utilizing raingardens for both educational potential and water management strategies in the park, the landscape offers interaction and learning opportunities.



GREAT LAWN

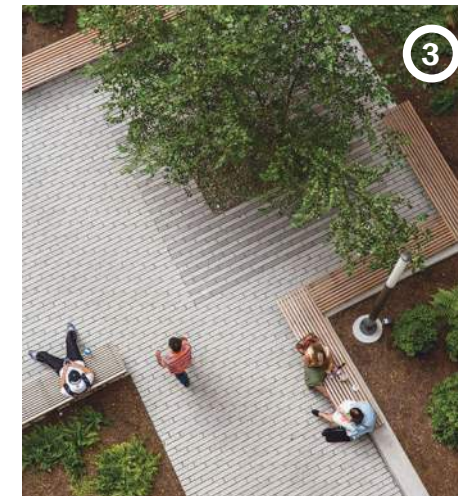


VIEW FROM SOUTH DROP-OFF LOOP, LOOKING NORTH

SOUTH DROP-OFF



⑥ School Lobby entry ⑦ Roof Terrace ⑧ Bike parking



SOUTH COURTYARD

Extending the Hive outside, the south courtyard offers a more private outdoor experience at the DAC and provides a secure entry for the School. Exterior stairs within the south courtyard guide visitors to the Roof Terrace during events.



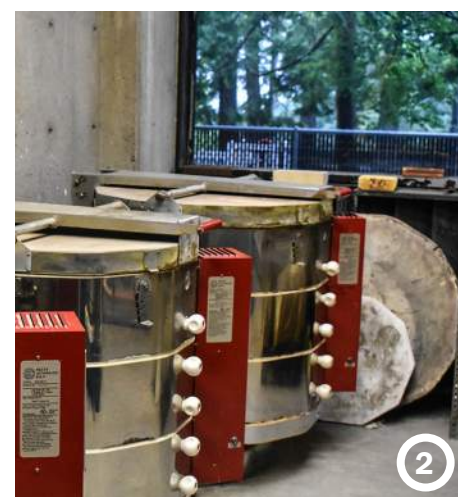
INTEGRATED SIGNAGE

Building signage at the south entry is integrated into the landscape privacy walls that separate the drop-off from the courtyard. These walls also act as defining edges of the raingarden and landscape.



SCHOOL DROP-OFF

A separate drop-off loop for the school allows separation of traffic for the DAC, and allows students to more securely enter and exit the building through a control point in the south courtyard.



ELEVATED CERAMICS

At Level 02, an exterior Kiln Yard south of the Ceramics studios provides shade and privacy for artists while connecting them with park landscape. The Kiln Yard also allows visitors at ground level to see activity within the space.



EDUCATION IN NATURE

Utilizing raingardens for both educational potential and water management strategies in the park, the landscape offers interaction and learning opportunities.

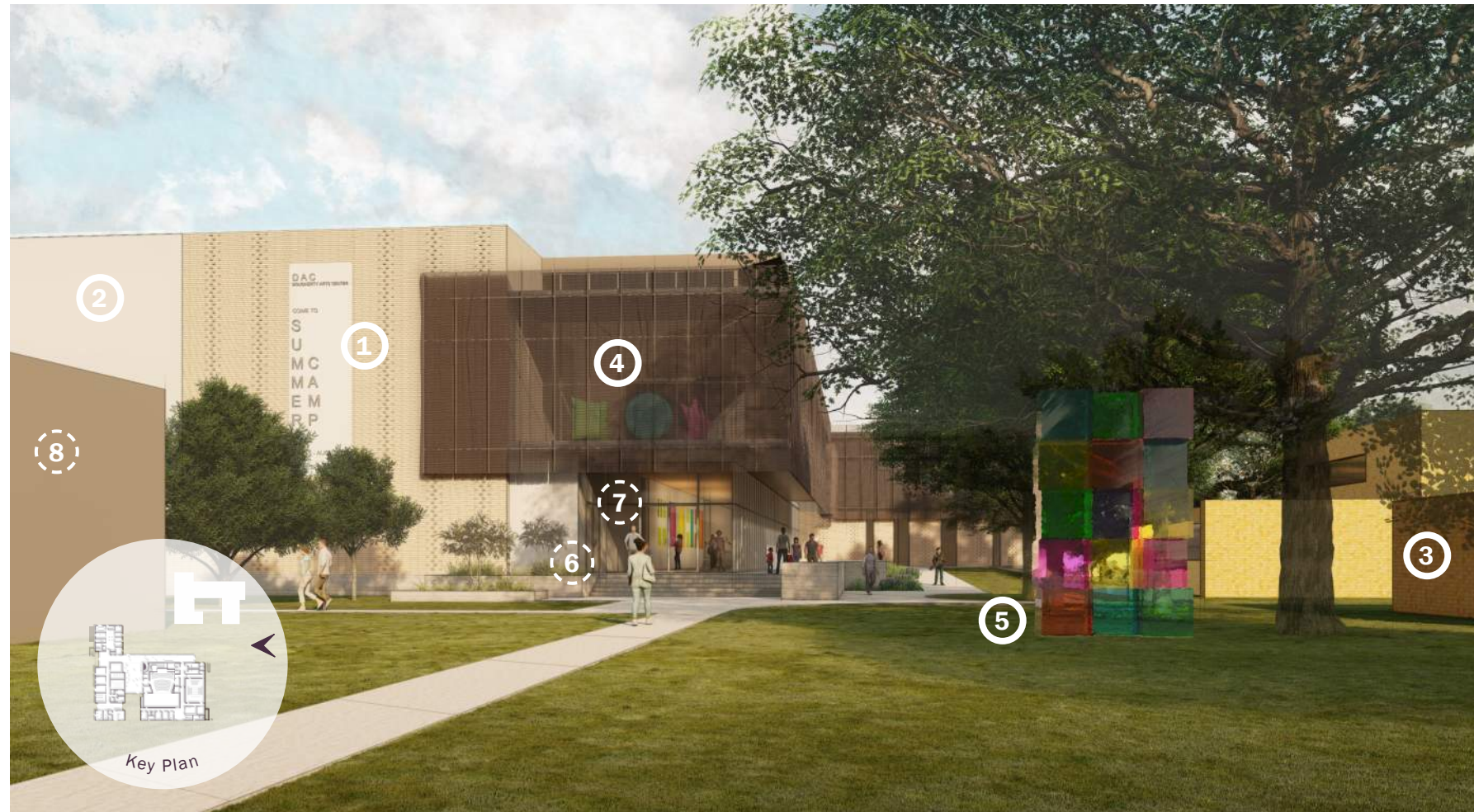


SOUTH DROP-OFF

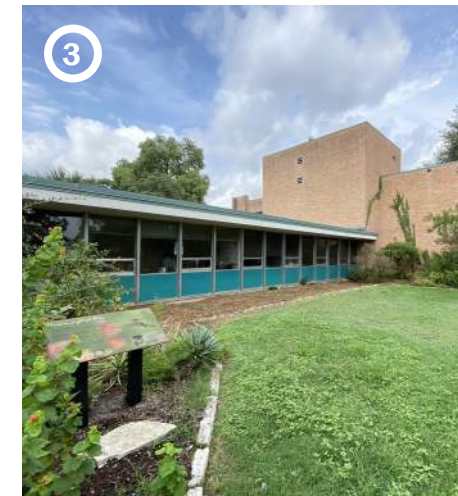


VIEW FROM ZACH, LOOKING WEST

ARTS PROMENADE



⑥ Stair & elevator down to Garage ⑦ DAC East Entry ⑧ The Kleberg at ZACH



PARKS & RECREATION

The new DAC responds to proportions and palette of the historic PARD building and organizes shared courtyard spaces between the two.



OUTDOOR GALLERY

Blending the interior gallery into a private, shaded exterior space, an outdoor terrace east of the Main Gallery on Level 02 offers additional sculptural art display opportunities for the DAC.



POSTERS & BANNERS

At the east entry, display locations for posters and banners provide the ability to announce and advertise exhibits, performances, and creative opportunities at the DAC.



MURAL MOMENT

Plaster wrapping the Theater volume at the southeast corner of the DAC provides a perfect opportunity for a large mural, which would be visible from the Arts Promenade and ZACH.



ART EVERYWHERE

Creating potential for an Arts Promenade linking the DAC, PARD, and ZACH, opportunities for sculpture fill the landscape near the east entry of the building.



ARTS PROMENADE



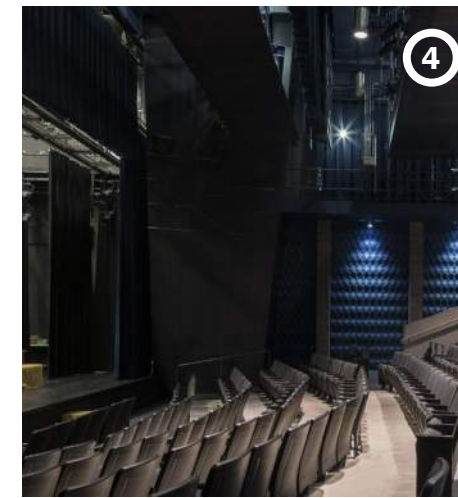
VIEW FROM HIVE MAKERSPACE LOOKING TOWARDS NORTH COURTYARD

THE HIVE



DONOR SIGNAGE

A crafted brick feature wall inside the Hive creates opportunities for donor recognition name plates, each of which fit into the brick patterning and coursing.



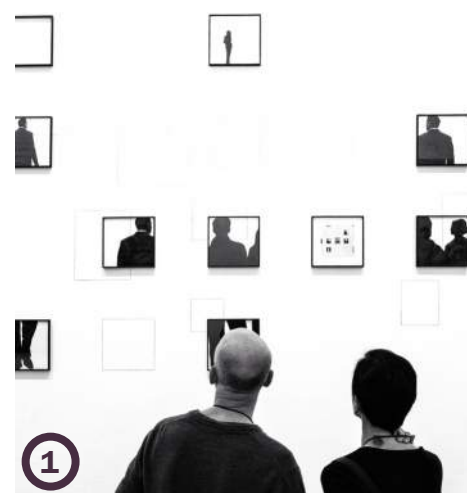
PROSCENIUM THEATER

The 150-seat Proscenium Theater for stage and dance productions provides expanded technical and performance capabilities from the current DAC Theater.



6 Entry to Main Gallery

7 Skybridge linking Gallery & Studios



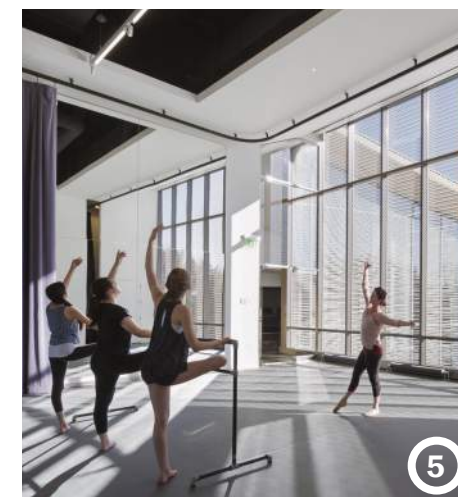
ART EVERYWHERE

Many walls throughout the Hive and public corridors function as gallery display walls to showcase art created at the DAC.



CREATIVE COMMONS

Accessible to members and visitors alike, the Creative Commons makerspace hosts rotating activities and welcomes people into the DAC by providing a free space to make art.



REHEARSAL SPACE

The floating glass box over the theater entrance houses a rehearsal space for theater or dance groups to practice their choreography. The gradient pattern on the glass provides some privacy while allowing the motion inside to activate the Hive space.



THE HIVE



Rehearsal Space

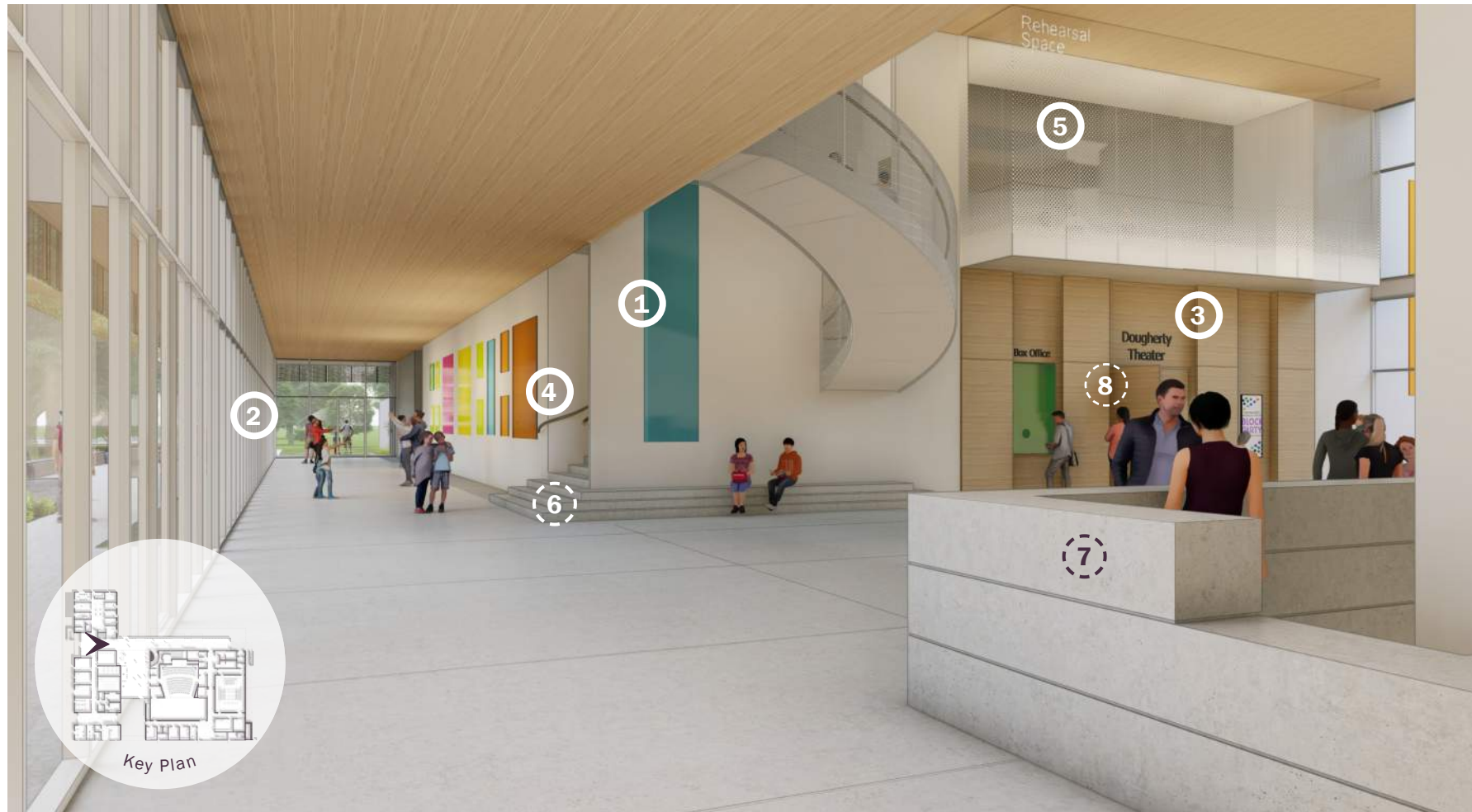
Box Office

Dougherty Theater

BLOCK PARTY

VIEW FROM WEST ENTRY, LOOKING EAST BEYOND THE HIVE TOWARDS THEATER PREFUNCTION

WEST ENTRY



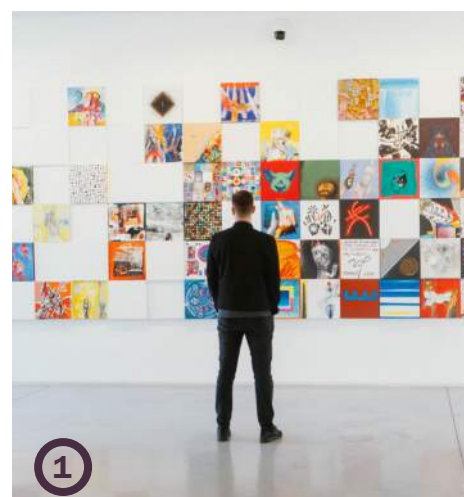
⑥ Monumental Stair to Level 02 ⑦ Reception/Information Desk ⑧ Proscenium Theater Entry



CRAFTED MATERIALS
 At key moments of interaction in the Hive, such as the Proscenium Theater entry, an elevated consideration of material craft is expressed. This image shows an example of uniquely crafted wood signage that blends with the neutral palette.



SUBTLE SIGNAGE
 Wayfinding signage, like this example, utilizes the neutral interior palette to guide visitors throughout the space while remaining non-competitive with visual focus on artwork.



ART EVERYWHERE
 Many walls throughout the HIVE and public corridors function as gallery display walls to showcase art created at the DAC.



INDOOR + OUTDOOR
 Operable panels along the Prefunction glass wall allow the lower gallery space outside the theater to be transformed into a larger indoor + outdoor space to host receptions for gallery or theater events.



REHEARSAL SPACE
 The floating glass box over the theater entrance houses a rehearsal space for theater or dance groups to practice their choreography. The gradient pattern on the glass provides some privacy while allowing the motion inside to activate the Hive space.



WEST ENTRY



LOOKING SOUTH

NORTH COURTYARD

ART IN PUBLIC PLACES (AIPP)



- AIPP is a program of the Cultural Arts Division within the Economic Development Department
- City Ordinance: Percent-for-Art Program
- What is Public Art?
 - Artist + Community
 - For, with and by



Project Development

6 months

Bond Election

Staff research

Sponsor Dept funding

Project approval (Panel, AAC, others possible)

Artist Selection

6-8 months

Call to Artist

Artist Selection Jury

Selection process approval (Panel and AAC)

Council authorization (if needed)

Design Development

1-2 years

Project kick off

Artist research

Mid Design for feedback

Final Design for feedback and approval (arts conservator, community, Panel and AAC)

Fabrication & Installation

1-2 years

Fabrication

Installation

Project closeout

Celebrate!

Where could artwork go?

Possible artwork locations:

1. Near Riverside walking path
2. Near rain garden & great lawn
3. North courtyard/primary entry
4. Inside the lobby
5. Within south courtyard
6. On south Theater facade

Artwork Budgets:

- (1) at \$200,000
- (3) At \$44,000



What we need from you!



What would you share with an artist to help them understand why the Dougherty Arts Center is special?

- *Ideas to get you thinking: Rich history, Vibrant culture, Multi-ethnic neighborhood, Long-time Austin residents, Area of growth, Unique landscape, etc.*

What word(s) could you share to help inspire goals for this artwork project?

- *Ideas to get you thinking: Memories, Future, Hope, Blackness, Family, Joy, Community, Play, Sorrow, etc.*

Why areas or ideas would you like the artist to highlight in this space?

- *Ideas to get you thinking: investment in our people, we need to have fun, swimming is good for exercise, etc.*

What's next for AIPP and the Dougherty?

- ✓ Gather community voices: TODAY!
- Draft project goals & prospectus: this month!
- Approval of prospectus by AIPP Panel and Arts Commission: May
- Open Call to Artists: June
- Select Artist: July
- Approval of artist selection by AIPP Panel, Arts Commission and City Council: August
- Artist on board: September
- Facility construction: TBD
- Artwork installed TBD



Questions?

Marjorie Flanagan

Art in Public Places Sr. Project Manager/Acting Program Manager

512-974-8706

Marjorie.Flanagan@austintexas.gov

Stay Connected:

- Art in Public Places Monthly Newsletter
- <https://www.facebook.com/CityofAustinArts/>
- www.austincreates.com
- Instagram: @CityofAustinArts

THANK YOU!

Video Fly-thru



What comes next?

- Design phase continues through end of 2022
- Project team refines scope to achieve LEED® and WELL™ certifications
- Site permitting process begins
- AIPP solicitation process launches
- City continues discussions with Budget Office
- DAC partners initiate capital campaign

Questions & Discussion

- Project information:
 - www.austintexas.gov/dacproject
 - dacproject@austintexas.gov

